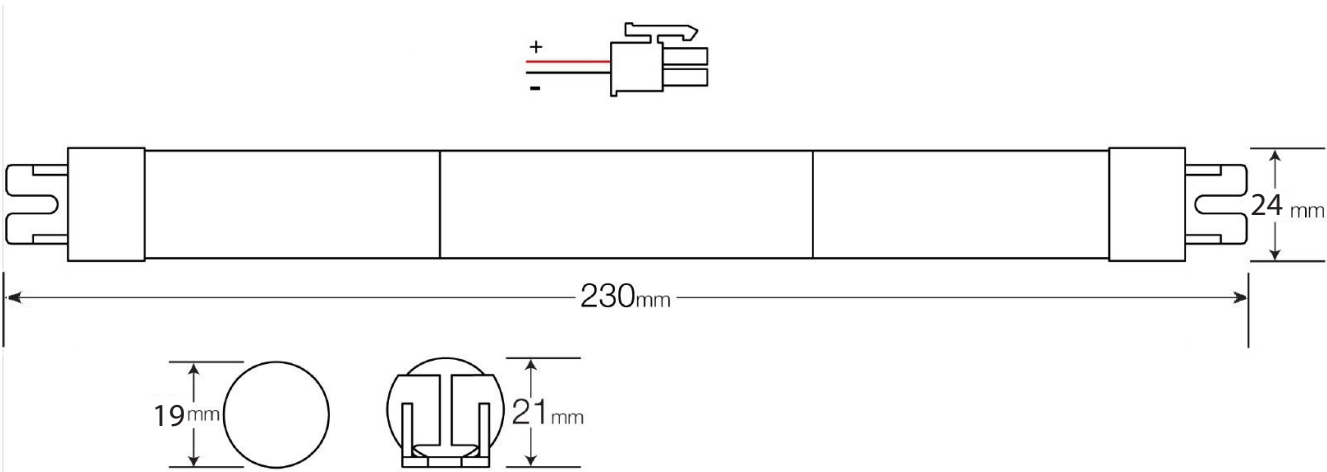


Battery Technical Specification
3/LP45/S/MS - 3.2V 4.5Ah
Lithium Iron Phosphate Stick



Technical Details:

Nominal Voltage (V)	3.2 Volts
Nominal Capacity	4.5Ah @ 25°C
Rated Wh	14.4Wh
Standard Charging Current	450mA
Standard Discharge Current	900mA to 2.5V
Charging Cut-off Voltage	3.65V

Dimensions:

With End Caps	230mm x 22mm x 24mm
Without End Caps	210mm x Ø 19mm
End Cap Fixing Centres	215-220mm
Weight	137g

Temperature:

Standard Temperature Range	0 to + 60°C
Storage (within 1 Year)	0 to + 25°C



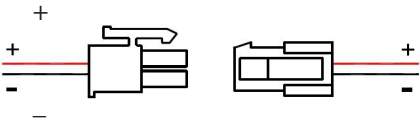
We advise that when shipping these batteries by air, that IATA regulation UN3481 PI966 is followed. This states that the battery must be packed with its associated control gear and the above label must appear on the outer packaging.

There are 2 versions available -

Order Codes

3/LP45/S/MS	3.2V 4.5Ah Sleeved with End Caps and Molex Connector
3/LP45/S/NECM	3.2V 4.5Ah Sleeved with Molex Connector and No End Caps

This battery features a protection circuit module (PCM) that regulates the current between cells and protects the battery from any potential short circuit situations.



Batteries supplied with leads are fitted with an irreversible socket & 20cm of cable.
ENSURE CORRECT POLARITY